

SUTO DANCE STUDIO

Takoma Studio
(established 1973)



Rockville Studio
(established 1982)

in affiliation with the

Takoma Park Recreation Center
7315 New Hampshire Avenue
Takoma Park, MD 20912
(301) 891-7289 (Center)

MANDATORY WALK IN REGISTRATION:

SATURDAY AUGUST 27, 2011
(11:00 A.M. to 2:00 P.M.)

Registration Fee: \$25 Per family (at same address)
(Non-refundable)

Classes Begin:

Saturday, September 10, 2011

Rockville Location

6116 Roseland Drive
Rockville, MD 20852

(301) 871-1000 (Studio)

MANDATORY MAIL-IN REGISTRATION:

REGISTRATION CARD AND TUITION PAYMENT
TO BE RECEIVED BY AUGUST 27, 2011

Registration Fee: \$25 Per family (at same address)
(Non-refundable)

Classes Begin:

Monday, September 12, 2011

Register, with your tuition payment, on or before Saturday, August 27th, and waive the Registration fee of \$25. (No exceptions, please)

Bobby Gene & Patty Suto, Co-Directors

offering classes in:

BALLET POINTE TAP JAZZ HIP HOP ZUMBA
ADULT CLASSES BALLROOM LINE DANCING

Ages 3 thru Senior Adult

Beginner thru Advanced



The 2011 annual dance performance video tape will be shown at all registration times.





SPECTACULAR ANNUAL DANCE PERFORMANCES OR DEMONSTRATIONS

The SUTO DANCE STUDIO does not discriminate on the basis of race, color, religion, sex, national origin, or age.

www.Sutodance.com

Rockville Location

6116 Roseland Drive Rockville MD 20852

MONDAY	TUESDAY	WEDNESDAY	THURSDAY
		Senior Adult Tap 1:30 - 2:30 pm	
Beginning Hip Hop Pre Teen / Teen 4:00 - 4:45 pm	Standard Ballet / Jazz / Tap combo 7 1/2 - 9 yrs. 4:00 - 5:15 pm	Pre Ballet / Tap 5 - 7 yrs. 4:00 - 4:45 pm	Kinder Ballet / Tap 3 - 5 yrs. 4:00 - 4:45 pm
Ballet Cecchetti I / Jazz / Tap combo 9 1/2 - 11 yrs. 5:15 - 6:30 pm	Ballet Cecchetti III - IV & Pointe 5:45 - 7:00 pm	Ballet Cecchetti II / Jazz / Tap combo 10 yrs. and up 5:30 - 7:00 pm	Ballet Cecchetti V & Pointe 5:45 - 7:00 pm
	Adult Ballet 7:15 - 8:30 pm	Adult Jazz / Tap 7:30 - 9:00 pm	Jazz / Tap / Hip Hop Teen / Young Adult 7:15 - 8:30 pm

PAYMENT CHART FOR ROCKVILLE AND SATURDAY TAKOMA CLASSES:

YEARLY REGISTRATION . . . TUITION

All dance classes are continuous from September thru May. A total of 32 weeks of classes is offered for the school year. The Suto Dance Studio encourages and recommends all students be committed to the entire year. There will be one or two annual dance performances or demonstrations, and in addition to the year's tuition, a Dance performance or Demo. package fee is required per student per class, for those students who wish to participate. Additional information regarding performance or demo. fees will be given out at a later date.

REFUND POLICY: We are sorry, but there will be NO REFUNDS for Tuition and Performance Fees, once classes are in session. In the case of serious illness, a partial refund may be applicable, when accompanied by a record of a physician's report.

SPECIAL DISCOUNTS: © *Early Full Year Tuition Payment Discount:* Those students who wish to pay for the Full Year Tuition on or before the first week of classes will receive 5% off tuition prices. **DISCOUNT PAYMENT WILL NOT BE PRORATED.**

CLASSES FOR LATE STARTERS WILL NOT BE PRORATED UNTIL OCTOBER, 2011.

PLEASE MAKE ALL CHECKS PAYABLE TO: SUTO DANCE STUDIO

There will be a \$25.00 service charge on all returned checks.

Payments may be made in cash, check or money order. Sorry, no credit cards.

Registration Fee: \$25 per family with same mailing address. (Non-Refundable)

Rockville & Takoma Tuition Chart	Per Semester (16 weeks)	Per Year On or before first week of classes <i>Includes 5% Discount</i>	Drop-in Class ↓
1 Class (45 minutes)	\$ 208.00	\$ 396.00	\$14.00
1 Class (60 minutes)	\$ 224.00	\$ 426.00	\$15.00
1 Class (75 minutes)	\$ 240.00	\$ 456.00	\$16.00
1 Class (90 minutes)	\$ 256.00	\$ 486.00	\$17.00
1 Class (120 minutes)	\$ 320.00	\$ 608.00	\$22.00

Placement of Students will be determined by the Directors. Ages are used as guidelines for class placement.

Group classes with less than 5 students may be combined or cancelled. Class schedule may be subject to change.

INCLEMENT WEATHER / INJURY POLICY: When the classes of Montgomery County Public Schools are cancelled due to inclement weather, the SUTO DANCE STUDIO classes are also cancelled. Saturday classes will be held unless the weather conditions are extremely severe. Please call 301-871-1000 for further information. If a student misses a class due to inclement weather, illness, or injury, it is the student's responsibility to make up the class. SUTO DANCE STUDIO cannot be held liable for any injuries sustained during class, rehearsals, and dance performances. Every precaution will be taken to see that all instruction is safe. All students take class at their own risk.

Donations of used dance shoes will be appreciated.

--- Tap Buttons are on sale for \$3.00 to replace shoe ties. Please label all attire and dance shoes. ---

Takoma Location

7315 New Hampshire Avenue Takoma Park, MD 20912

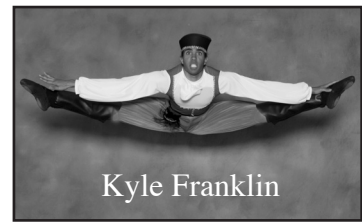
SATURDAY	SATURDAY
Kinder Ballet / Tap 3 - 5 yrs. 10:00 - 10:45 am	Pre Ballet / Tap 5 - 7 yrs. 10:00 - 10:45 am
Standard Ballet / Jazz / Tap combo 7 1/2 - 9 yrs. 11:00 am - 12:15 pm	Ballet Cecchetti I / Jazz / Tap combo 10 - 12 yrs. 11:00 am - 12:15 pm
Ballet Cecchetti II - III and Jazz / Tap combo Teen 12:30 - 2:00 pm	Ballet Cecchetti IV - V and Jazz / Tap combo Teen / Young Adult 12:30 - 2:30 pm
Adult Jazz / Tap 2:15 - 3:30 pm	Beginning Hip Hop Pre Teen / Teen 2:45 - 3:30 pm

The Dancing Club Location

5050-D Nicholson Lane Rockville, MD 20852 (across from Wendy's)

MONDAY	THURSDAY
Continuous Senior Line Dancing 11:00 am -12:00 noon	Continuous Senior Line Dancing 11:00 am -12:00 noon
Zumba Lunchtime Workout 12:00 - 12:45 pm	Zumba Lunchtime Workout 12:00 - 12:45 pm
Zumba Evening Workout 6:00 - 6:45 pm	<i>Please call Suto Dance Studio for more information, and prices, for the above classes. 301-871-1000</i>
Beginner Tap Teen / Adult 7:00 - 7:45 pm	

For more info. on other activities offered at *The Dancing Club* (Ballroom, Hustle, Swing, Salsa and Tango) visit: www.thedancingclub.com



Kyle Franklin

DANCE ATTIRE MAY BE PURCHASED AT:

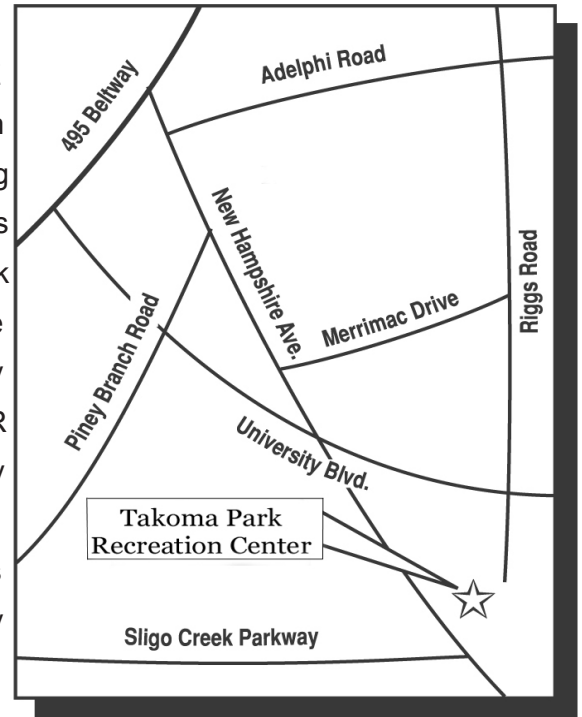
- | | | |
|--------------------------------|----------------|---|
| 1. Repeat Performance | (301) 881-0800 | 5050 B Nicholson Lane, Rockville, MD 20852 |
| 2. Les Gals Activewear | (301) 608-3237 | 2337 Distribution Circle, Silver Spring, MD 20910 |
| 3. Junior Mode Shoes and Dance | (301) 779-1146 | 5845 Riverdale Rd., Riverdale, MD 20737 |

DANCE ATTIRE

- KINDER/ PRE-BALLET / TAP (Girls) Classic pink leotard; Capezio (ultra soft) footed pink tights; (white Anklet socks for warmer months) Pink ballet slippers with elastic, black tap shoes; pink dance skirt optional; hair in pony tail.
- STANDARD BALLET COMBO (Girls) Light blue leotard; Capezio (ultra soft) footed pink tights; pink split sole ballet slippers with elastic, Black tap shoes, (Tan jazz shoes required Second Semester); Dance skirt optional; hair in bun.
- BALLET I - V (Girls) Solid colored or black leotard; Capezio (ultra soft) transition pink tights; pink split sole ballet Slippers with elastic; black dance skirt optional; hair in bun. Pointe shoes additional.
- JAZZ / TAP / HIP HOP (Girls) Solid colored or black leotard; Capezio (ultra soft) footed light suntan tights; Black jazz pants or biker shorts; black dance sneakers; black tap shoes.
- BALLET / TAP (Boys) White tee shirt; black tights; white socks; black ballet slippers with elastic; black tap shoes.
- JAZZ / TAP / HIP HOP (Boys) White tee shirt, black jazz pants, black dance sneakers and black tap shoes.
- BALLROOM/ LINE DANCE / ZUMBA Dance or street clothes. Ballroom shoes or Dance sneakers. No Street Shoes Please.

TAKOMA CALENDAR

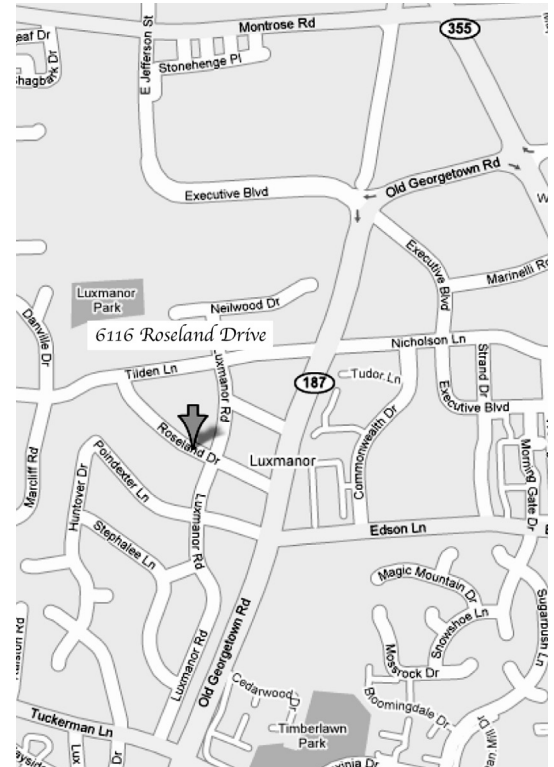
August 27, 2011WALK-IN REGISTRATION / TUITION FEES DUE
 September 10, 2011 Classes Begin
 November 26, 2011 Closed: Thanksgiving
 December 10 & 17, 2011Visitation Days
 December 24, 31, 2011 Closed: Winter Break
 January 7, 2012 Classes Resume
 January 14, 2012 Closed: M.L.K. Jr. Holiday
 January 28, 2012 TUITION DUE 2nd SEMESTER
 February 18, 2012 Closed: President's Day
 April 21, 2012 Mandatory Stage Mother Meeting
 May 19, 2012 Last Day of Classes
 May 26, 2012 Closed: Memorial Day



ROCKVILLE CALENDAR

August 27, 2011 MAIL-IN REGISTRATION / TUITION FEES DUE
 September 12 - 15, 2011 Classes Begin
 November 21 - 24, 2011 Closed: Thanksgiving
 December 12 - 15, 2011 Visitation Days
 December 19, 2011 - January 1, 2012 Closed: Winter Break
 January 2, 2012 Classes Resume
 January 23 - 26, 2012 TUITION DUE 2nd SEMESTER
 April 2 - 5, 2012 Closed: Spring Break
 April 9, 2012 Classes Resume
 April 21, 2012 Mandatory Stage Mother Meeting
 May 21 - 24, 2012 Last Week of Classes

Takoma Park Rec. Center
 7315 New Hampshire Ave.
 (301) 871-1000



Suto Dance Studio
 6116 Roseland Drive
 (301) 871-1000

MANDATORY STAGE MOTHER MEETING, PICTURE DAY, REHEARSALS, PERFORMANCE OR DEMONSTRATION DATES FOR BOTH SCHOOLS, COMBINED

April 21, 2012 STAGE MOTHER MEETING
 May 5, 12, 19, 2012 COMBINED REHEARSALS
 AT T.P.R.C. FOR BOTH SCHOOLS
 May 20, 2012 PICTURE DAY AT T.P.R.C.
 May 30, 31, June 1, 2012 STAGE & DRESS REHEARSALS
 June 2 & 3, 2012 DANCE PERFORMANCES